

FTG | **MOWI**



A good day in the forest...



Forest Technology Group

Forest Technology Group supports those who work in the forest with unique, high-quality products for harvesting, transporting and processing timber. We design, develop and produce functional trailers and cranes for forestry professionals.

Forest Technology Group - FTG - is made up of several strong, independent brands, each with unique characteristics tailored to their target group.

Our joint programme includes trailers, cranes, accessories, scarifiers, road graders and harvester heads - developed to handle hard and efficient work in the forest.





is a day when every moment is a moment of joy.

Working in the forest is the best job in the world according to many people. When everything works, it's easy. Anyone who has chosen to work in the forest knows this. As do many of the people who develop and build Mowi products. They know what you're talking about. With Mowi's unique cranes and well-built forestry trailers, you get easy-to-operate and agile forestry trailers that make your work in the forest fast, efficient and fun. A pure joy quite simply.

The trailer that makes your forestry equipment perfect

The Mowi trailer is designed based on the characteristics of Mowi's cranes to form a perfect unit.

Sturdy construction and double-acting hydraulics in the crane mean that some models can be used equally well without support legs.

Drawbar steering with well-protected cylinders on all models, telescopic poles and heavy-duty support legs for those who require it.

The special bogie design with high ground clearance and a smooth underside helps you over logs and rocks.

The low centre of gravity makes the trailer stable during loading and unloading - even without the use of support legs.

Swedish quality and proven design

Mowi cranes and trailers are manufactured in Sweden.

Design and development are also carried out in Sweden by experienced forestry specialists.

Twice as economical

Mowi helps you save money in the forest. Low oil flows allow you to run the tractor at low speeds, reducing fuel consumption and wear and tear. Your Mowi offers you low running costs and, if properly maintained, will last a long time.

It also has a high resale value, making it easy to trade in when you want to exchange it for new or larger Mowi equipment.

9 choices for your new Mowi trailer

A forestry trailer from Mowi gives you great freedom of choice.

With your choice of trailer features, equipment and accessories, you can design a trailer to meet your exact requirements.





1

TRAILER

We offer trailers from 9-15 tonnes with or without drive. The size of the trailer is chosen according to the performance of the tractor and your needs, get a combination that works best for you..

2

DRIVE

In hilly terrain with wet soils, it may be necessary to have *drive* on the trailer. For trailers of 10 tonnes and above, "Robson drive" is often chosen, where a roller drives the wheels hydraulically. For the 12-tonne trailer, the *hub drive* option is offered on the rear pair of wheels.

3

BRAKES

In hilly terrain and when travelling with loads, a trailer with *brakes* is recommended. We offer both *disc brakes* and *drum brakes*.

4

HYDRAULIC SYSTEM

If the tractor's hydraulic flow is not high enough, a separate hydraulic system can be added to increase capacity.

5

CRANE

For each of our trailers we offer several well thought-out *crane options*. The crane is selected based on the requirements for reach and lifting force.

6

ROTATOR AND GRAPPLE

For each crane, there are recommended suggestions for *rotators* and *grapples*. We also offer the option of choosing from a number of alternative grapples and buckets. A *braked link* is also available as an option, which means that the grapple "swings" less on the rotator.

7

VALVE ASSEMBLIES

There are many *valves* and *control systems* to choose from, from simple mechanical valves to more advanced, fully electronic control systems.

8

WINCHES

A *radio controlled winch* is today chosen for almost all trailers. Two options are available. Model 1410 with 1400 kg traction (6 mm wire rope 35 m) is the most common, but we also have model 1810 with 1800 kg traction (8 mm wire rope 30 m).

9

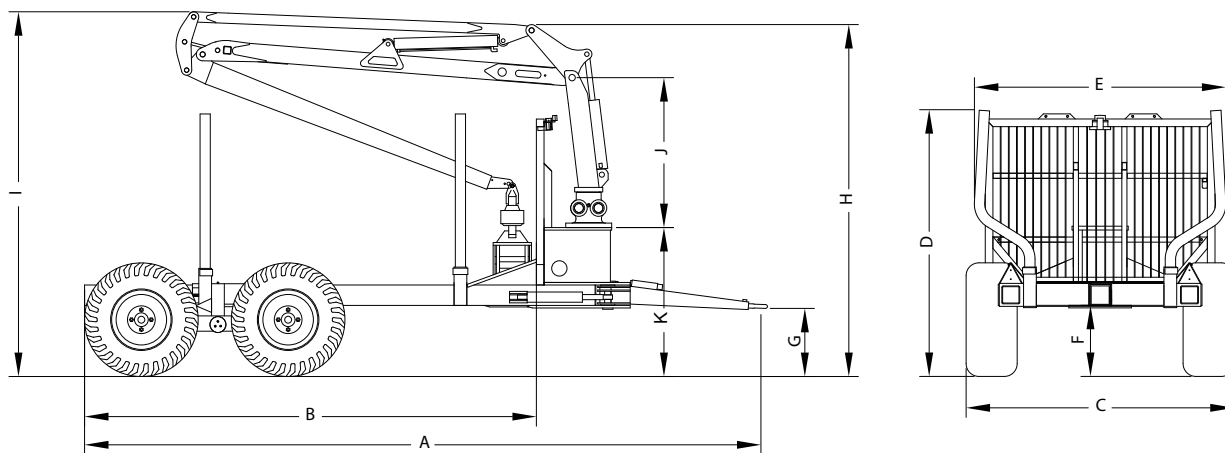
COMMON OPTIONS

Other common options include support legs, toolbox, chainsaw holder and rear view camera.

1. TRAILERS

Once Mowi - always Mowi

Within the company there is a genuine forestry expertise that is reflected in our products. We don't just know how to make a forestry trailer - we also know how to use it. This provides unique knowledge to benefit our customers. Mowi products have become very well-known and popular over the years. "Once Mowi - always Mowi" is a well-known expression among users. An important reason is customer-oriented product development carried out by our experienced forestry specialists.



| Sektion | | A | B | C | D | E | F | G | H | I | J | K | |
|---------|------------|------------------|--------------|-------------|-----------------|--------------------------|---------------------|------------------|-----------------|-------------------|--------------------|---------------|------------------------|
| Trailer | Crane | Wheel dimensions | Total length | Load length | Width of wheels | Height Ground - Pole top | Width of ext. poles | Ground clearance | Draw-bar height | Total height rear | Total height front | Pillar height | Height of crane pallet |
| | | | mm | mm | mm | mm | mm | mm | mm | mm | mm | mm | mm |
| 850 | P25 | 400/60x15,5 | 5500 | 3740 | 2040 | 2030 | 1850 | 510 | 500 | 2910 | 2950 | 1270 | 1185 |
| | P30/P31T | 400/60x15,5 | 5500 | 3740 | 2040 | 2030 | 1850 | 510 | 500 | 2910 | 2950 | 1270 | 1185 |
| 1050 | P30/P31T | 15/70x18 | 5350-5950 | 3150-3750 | 2100 | 2270 | 2100 | 620 | 500 | 3040 | 3160 | 1270 | 1270 |
| | P30/P31T | 500/45x22,5 | 5350-5950 | 3150-3750 | 2366 | 2270 | 2100 | 620 | 500 | 3040 | 3160 | 1270 | 1270 |
| | P41/P41T | 15/70x18 | 5350-5950 | 3150-3750 | 2100 | 2270 | 2100 | 620 | 500 | 3270 | 3300 | 1410 | 1270 |
| | P41/P41T | 500/45x22,5 | 5350-5950 | 3150-3750 | 2366 | 2270 | 2100 | 620 | 500 | 3270 | 3300 | 1410 | 1270 |
| 1050 WD | P30/P31T | 400/55x22,5 | 5100-5700 | 3130-3730 | 2200 | 2350 | 2100 | 690 | 500 | 3040 | 3190 | 1270 | 1285 |
| | P30/P31T | 500/45x22,5 | 5100-5700 | 3130-3730 | 2440 | 2350 | 2100 | 690 | 500 | 3040 | 3190 | 1270 | 1285 |
| | P41/P41T | 400/55x22,5 | 5100-5700 | 3130-3730 | 2200 | 2350 | 2100 | 690 | 500 | 3040 | 3190 | 1410 | 1285 |
| | P41/P41T | 500/45x22,5 | 5100-5700 | 3130-3730 | 2440 | 2350 | 2100 | 690 | 500 | 3040 | 3190 | 1410 | 1285 |
| 1250 | P41 | 15/70x18 | 5400-6000 | 3400-4000 | 2180 | 2500 | 2210 | 660 | 500 | 3280 | 3320 | 1410 | 1285 |
| | P41T | 500/50x17 | 5400-6000 | 3400-4000 | 2315 | 2500 | 2210 | 650 | 500 | 3280 | 3320 | 1410 | 1285 |
| | P51/P51T | 500/45x22,5 | 5400-6000 | 3400-4000 | 2325 | 2500 | 2210 | 675 | 500 | 3420 | 3450 | 1540 | 1285 |
| 1250 ND | P41/P41T | 500/45x22,5 | 5500-5885 | 3840-4080 | 2360 | 2500 | 2210 | 650 | 500 | 3280 | 3320 | 1410 | 1285 |
| | P51/P51T | 500/45x22,5 | 5500-5885 | 3840-4080 | 2360 | 2500 | 2210 | 650 | 500 | 3420 | 3450 | 1540 | 1285 |
| 1250 WD | P41/P41T | 500/45x22,5 | 5360-5960 | 3350-3950 | 2300 | 2500 | 2210 | 690 | 500 | 3280 | 3320 | 1410 | 1285 |
| | P51/P51T | 500/45x22,5 | 5360-5960 | 3350-3950 | 2300 | 2500 | 2210 | 690 | 500 | 3420 | 3450 | 1540 | 1285 |
| 1450 WD | P51 | 500/60x22,5 | 6000-6450 | 3900-4350 | 2450 | 2880 | 2390 | 540 | 500 | 3650 | 3800 | 1540 | 1510 |
| | P51T | 600/55x22,5 | 6000-6450 | 3900-4350 | 2500 | 2880 | 2390 | 540 | 500 | 3650 | 3800 | 1540 | 1510 |
| | P81T/P81DT | 600/55x22,5 | 6000-6450 | 3900-4350 | 2525 | 2880 | 2390 | 540 | 500 | 3750 | 2300 | 1730 | 1510 |



TECHNICAL DATA

All technical data about our trailers can be found on our website. Use the QR code to go directly to the website.



NON DRIVEN TRAILERS



MOWI 850

Convenient forestry trailer for farmers and foresters!

The Mowi 850 has a load capacity of 9 tonnes and is the smallest forestry trailer in the Mowi range. This is a convenient trailer suitable for smaller tractors and is **one of our best sellers!**

The Mowi 850 is equipped in the basic version with a Mowi P25 parallel crane (5.2 m/400 kg) that comes with a double slew motor, CR300 rotator, FB160 grapple and multi-lever valve.

| | |
|---------------|------------------|
| Load capacity | 9000 kg |
| Load area | 2 m ² |
| Weight | 1115 kg |
| Tyre size | 400/60x15.5 |



MOWI 1050

A trailer for most people's needs!

The Mowi 1050 has a 10 tonne load capacity and is **the best-selling forestry trailer in the Mowi range.** This is a versatile trailer with a large load capacity suitable for many farms. Used in both forestry and agriculture.

The trailer is equipped with 15/70x18 wheels and drawbar steering as standard. The basic version is equipped with the Mowi P30 parallel crane (5.7 m/450 kg) supplied with a double slew motor,

| | |
|---------------|--------------------|
| Load capacity | 10000 kg |
| Load area | 2.3 m ² |
| Weight | 1650 kg |
| Tyre size | 15/70x18 |



MOWI 1250

The Mowi 1250 has a 12 tonne load capacity and is one of the larger trailers in the Mowi range. **This is a trailer with a large load capacity suitable for both private forest owners and contractors.** The trailer is multifunctional and can be used all over the farm.

The basic Mowi 1250 is equipped with a Mowi P41 parallel crane (6.5 m/480 kg) that comes with a double slew motor, CR300 rotator, FB190WF grapple and multi-lever valve.

| | |
|---------------|--------------------|
| Load capacity | 12000 kg |
| Load area | 2.7 m ² |
| Weight | 1850 kg |
| Tyre size | 15/70x18 |



MOWI 1450

A heavyweight in the forest! The Mowi 1450 has a load capacity of 15 tonnes and is the largest trailer in the Mowi range.

This is a trailer with a very high load capacity, mainly suitable for larger forest owners and contractors. The trailer is multifunctional and has several different applications.

In the basic version, it is equipped with a Mowi P51 parallel crane (6.5 m/550 kg) that comes with a double slew motor, CR400 rotator, FB260 grapple and multi-lever valve.

| | |
|---------------|--------------------|
| Load capacity | 15000 kg |
| Load area | 3.3 m ² |
| Weight | 3300 kg |
| Tyre size | 500x60x22.5 |



DRIVEN TRAILERS



MOWI 1050 WD

A trailer to get you around!

The Mowi 1050 WD has a 10 tonne load capacity and is the smallest forestry trailer with drive in the Mowi range. This is **a handy trailer with a large load capacity that can handle demanding terrain** thanks to its hydraulic drive.

The Mowi 1050 WD in the basic version is equipped with a P30 parallel crane (5.7 m/450 kg) that comes with a double slew motor, CR300 rotator, FB190 grapple and multi-lever valve.

| | |
|---------------|--------------------|
| Load capacity | 10000 kg |
| Load area | 2.3 m ² |
| Weight | 2080 kg |
| Tyre size | 400/55x22.5 |



MOWI 1250 WD

The Mowi 1250 WD has a 12 tonne load capacity and is **the best-selling driven forestry trailer in the Mowi range.**

This is a trailer with a large load capacity that can cope with demanding terrain thanks to its hydraulic drive. The trailer is suitable for both private forest owners and contractors.

The basic version of the Mowi 1250 WD is equipped with a P41 parallel crane (6.5 m/480 kg) that comes with a double slew motor, CR300 rotator, FB190WF grapple and multi-lever valve.

| | |
|---------------|--------------------|
| Load capacity | 12000 kg |
| Load area | 2.7 m ² |
| Weight | 2310 kg |
| Tyre size | 500x45x22.5 |



MOWI 1250 ND

The hub-driven alternative!

The Mowi 1250 ND has a load capacity of 12 tonnes. This is a trailer that can handle tough terrain thanks to its hydraulic hub drive, with **the option of adding tracks or chains.** Suitable for both private forest owners and contractors.

The Mowi 1250 ND is equipped in the basic version with a P41 parallel crane (6.5 m/480 kg) with a double slew motor, CR300 rotator, FB190WF grapple and multi-lever valve.

| | |
|---------------|--------------------|
| Load capacity | 12000 kg |
| Load area | 2.7 m ² |
| Weight | 2800 kg |
| Tyre size | 500x45x22.5 |



MOWI 1450 WD

For forestry professionals who's looking for the big loads!

The Mowi 1450 WD has a load capacity of 15 tonnes and is **the largest driven trailer in the Mowi range.** This is a trailer that can cope with the most demanding terrain. Suitable mainly for larger forest owners and contractors.

The Mowi 1450 WD is equipped in the basic version with a P51 parallel crane (6.5 m/550 kg) that comes with a double slew motor, CR400 rotator, FB260 grapple and multi-lever valve.

| | |
|---------------|--------------------|
| Load capacity | 15000 kg |
| Load area | 3.3 m ² |
| Weight | 3300 kg |
| Tyre size | 500x60x22.5 |



2. DRIVE

Driven or non driven? Let the terrain decide!

The forest presents various terrain challenges, making it difficult to maneuver. FTG Mowi forestry trailers address this by providing high ground clearance, making navigation easier. Our range includes both driven and non-driven trailers. While non-driven trailers are suitable for lighter terrain, driven trailers are recommended for hilly, wet terrain as they reduce strain on the tractor and minimize the risk of getting stuck.

Our trailers without drive have a durable and well-proven design, appreciated by customers for generations. High ground clearance and the clever design of the bogie make it easier to get over stumps and rocks.

For more demanding terrain, a Mowi trailer with drive may be a necessary option. The drive helps your vehicle move forward and avoids you from getting stuck.

Robson drive - where a roller drives the wheels hydraulically - works well in all terrains and provides a good interaction between the trailer and tractor.

The Mowi 1250 ND is equipped with hub drive on the rear wheel pair. The hub drive also allows the use of chains or tracks when the terrain requires it.

The drive is easily engaged and disengaged via an electronically controlled valve that is operated by switches in the tractor. With the drive disconnected, the trailer can move freely.

Mowi's trailers with drive have held a leading market position for decades, giving you confidence in your choice of trailer. With a high resale value, you'll get a good deal when you trade it in for a new, or larger Mowi...

UNDRIVEN TRAILERS



FTG Mowi has a unique easy-climbing bogie that provides lower ground pressure on the front pair of wheels, allowing the trailer to move smoothly over obstacles.

ROBSON DRIVE



Robson drive gives you a powerful all-wheel drive trailer with high traction and a reliable construction. Drive rollers adapted to tire tread patterns to ensure smooth operation and excellent manoeuvrability.

HUB DRIVE



Hub drive means strong two-wheel drive and the ability to use chains or tracks when the terrain requires it. The design combines our easy-climbing bogie with *Black Bruin wheel motors* on the rear wheels.



| Drive traction | kg |
|----------------|--------------|
| 1050 WD | 2000 kg |
| 1250 WD | 2500 kg |
| 1250ND | 2500 kg |
| 1450 WD | 3000/4000 kg |

3. BRAKES

Brakes on the trailer increases safety

All of our forestry trailers can be equipped with braking systems - disc brakes or drum brakes. Brakes on the trailer increase safety in both off-road and on-road. When driving with heavy loads, the brakes also help to reduce workload on the tractor.

With *disc brakes* on the trailer, you get a simple and service-friendly design that can cope with any forest conditions.

Brake discs and yokes are exposed and easily accessible, reducing the risk of dirt, mud and moisture accumulating and impairing the braking performance. Trailers with disc brakes can therefore be used in the most demanding terrains.

Drum brakes provide high braking performance thanks to the pads large braking area.

Drum brakes are based on an encapsulated system technology and are an excellent option when the trailer is used for loading and driving on road.



4. HYDRAULIC SYSTEM

Hydraulic system - for greater hydraulic flow

In cases where the hydraulic flow of the tractor is not sufficient to reach the desired capacity of the forestry trailer, a separate hydraulic system on the trailer may be recommended. Choose between different types of pumps depending on the size and capacity of the trailer.



**GEAR PUMP
70 L/MIN**

Item no. FA0067

| | | | |
|------------|------------|------------|------------|
| 850 | 1050 | 1250 | 1450 |
| 1050 WD | 1250 ND | 1250 WD | 1450 WD |



**GEAR PUMP
90 L/MIN**

Item no. FA0063

| | | | |
|------------|------------|------------|------------|
| 850 | 1050 | 1250 | 1450 |
| 1050 WD | 1250 ND | 1250 WD | 1450 WD |



**PISTON PUMP
81 L/MIN**

Item no. FA0550
*Can be mounted
on drawbar*

| | | | |
|------------|------------|------------|------------|
| 850 | 1050 | 1250 | 1450 |
| 1050 WD | 1250 ND | 1250 WD | 1450 WD |



**PISTON PUMP
101 L/MIN**

Item no. FA0546
*Can be mounted
on drawbar*

| | | | |
|------------|------------|------------|------------|
| 850 | 1050 | 1250 | 1450 |
| 1050 WD | 1250 ND | 1250 WD | 1450 WD |



**LS-PUMP
130 L/MIN**

Item no. FA0421
Drawbar mount only

| | | | |
|------------|------------|------------|------------|
| 850 | 1050 | 1250 | 1450 |
| 1050 WD | 1250 ND | 1250 WD | 1450 WD |





The Mowi forestry trailer becomes what you make of it. With great freedom of choice in every detail, the trailer is shaped exactly to your requirements.



5. CRANES

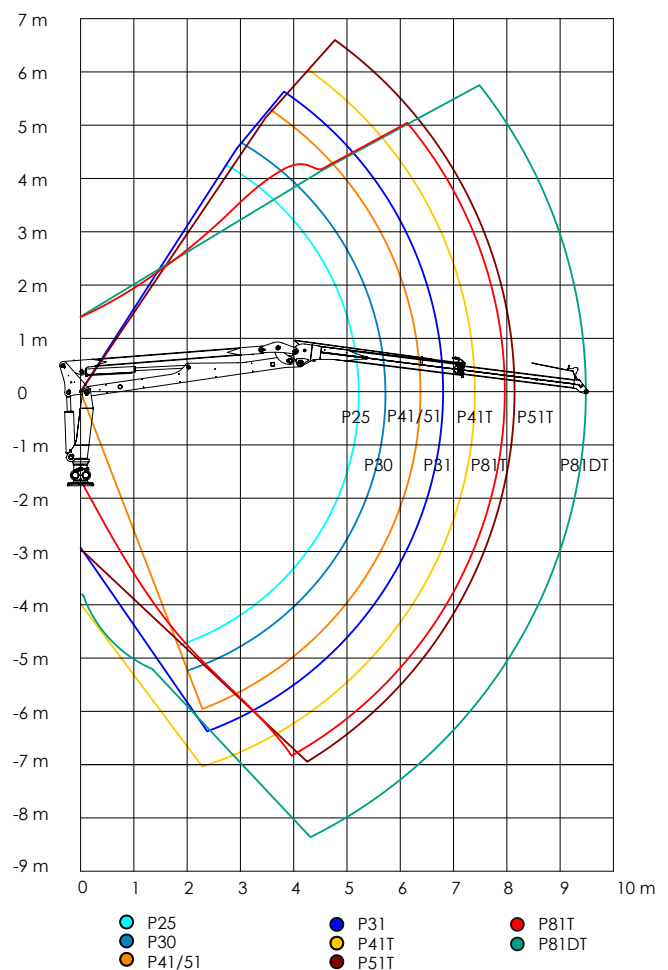
There is only one original.

Design of the Mowi cranes is unique. It has characteristics that no other forestry crane has. The parallel-guided crane arm invented by Mowi's founder Wiking Gunnarsson has been further developed over the years into the highly regarded cranes manufactured in Bäckefors today. Crane manufacturers all over the world have tried to copy this idea but Mowi is the original.

Together with Mowi's well-built forestry trailers, you get an easy-to-operate and agile combination that makes your work in the forest fast, efficient and fun - for years to come.

So what are the characteristics that make Mowi your best friend in the forest?

- You will quickly learn how to operate a Mowi
- The crane tip moves in a straight path at a steady pace in one operation.
- "Stronger" than conventional knuckle boom cranes - with lifting power in the right place
- You load faster and safer with smooth movements and great precision
- Smart reach in a fast operation
- Good reach close to the tractor and the trailer – even under "ground level"
- High lifting height in the area close to the trailer, important for unloading.
- Low oil flow save diesel, reduce wear and tear on your tractor and provide a better work environment.
- Long reach with extension



Movement diagram

TECHNICAL DATA

All technical data about our cranes can be found on our website. Use the QR code to go directly to the page.



| TRAILER/CRA | P25 | P30 | P31T | P41 | P41T | P51 | P51T | P81T | P81DT |
|-------------|-----|-----|------|-----|------|-----|------|------|-------|
| 850 | ■ | ■ | ■ | | | | | | |
| 1050 | | ■ | ■ | ■ | | | | | |
| 1250 | | | | ■ | ■ | ■ | ■ | | |
| 1450 | | | | | | ■ | ■ | ■ | ■ |
| 1050 WD | | ■ | ■ | ■ | ■ | | | | |
| 1250 WD | | | | ■ | ■ | ■ | ■ | | |
| 1250 ND | | | | ■ | ■ | ■ | ■ | | |
| 1450 WD | | | | | | ■ | ■ | ■ | ■ |



MOWI P25

The Mowi P25 is designed for the Mowi 850 trailer. The P25 has a reach/lifting capacity of 5.2 m/400 kg.

The crane has a lifting torque of 26 kNm.

As standard, equipped with a CR300 rotator, FB160 grapple and multi-level valve.

| | |
|----------------------------------|-------------|
| Reach: | 5.2 m |
| Lifting torque, gross: | 26 kNm |
| Lifting capacity, maximum reach: | 400 kg |
| Lifting capacity, 4 m: | 550 kg |
| Slewing torque: | 8.5 kNm |
| Slewing angle: | 360° |
| Rec. oil flow: | 20-25 l/min |
| Weight w/o grapple and rotator: | 520 kg |



MOWI P30

The Mowi P30 is designed for the Mowi 850, 1050 and 1050 WD trailers. P30 has a reach/lifting capacity of 5.7 m/450 kg.

The crane has a lifting torque of 31 kNm.

As standard, equipped with a CR300 rotator, FB190 grapple and multi-level valve.

| | |
|----------------------------------|-------------|
| Reach: | 5.7 m |
| Lifting torque, gross: | 31 kNm |
| Lifting capacity, maximum reach: | 450 kg |
| Lifting capacity, 4 m: | 705 kg |
| Slewing torque: | 8.5 kNm |
| Slewing angle: | 360° |
| Rec. oil flow: | 25-30 l/min |
| Weight w/o grapple and rotator: | 540 kg |



MOWI P31T

The Mowi P31T is designed for Mowi 850, 1050, and 1050 WD forestry trailers. The crane is also sold to tractor assemblers and to OEM customers for mounting on forestry machines.

The crane is equipped with CR300 rotator, FB190 grapple and multi-level valve as standard, with a variety of valve assemblies and accessories to choose from.

| | |
|----------------------------------|-------------|
| Reach: | 6.7 m |
| Lifting torque, gross: | 34 kNm |
| Lifting capacity, maximum reach: | 360 kg |
| Lifting capacity, 4 m: | 700 kg |
| Slewing torque: | 8.5 kNm |
| Slewing angle: | 360° |
| Rec. oil flow: | 30-35 l/min |
| Weight w/o grapple and rotator: | 625 kg |



MOWI P41

The Mowi P41 is designed for Mowi 1050, 1250, 1050 WD, 1250 ND and 1250 WD forestry trailers. The crane is also sold to tractor assemblers and to OEM customers for mounting on forestry machines.

The crane is equipped with a CR300 rotator, FB190WF grapple and multi-level valve as standard, with a variety of valve assemblies and accessories to choose from.

| | |
|----------------------------------|-------------|
| Reach: | 6.5 m |
| Lifting torque, gross: | 43 kNm |
| Lifting capacity, maximum reach: | 500 kg |
| Lifting capacity, 4 m: | 950 kg |
| Slewing torque: | 11 kNm |
| Slewing angle: | 360° |
| Rec. oil flow: | 30-35 l/min |
| Weight w/o grapple and rotator: | 850 kg |





MOWI P41T

The Mowi P41T is designed for the Mowi 1250, 1050 WD, 1250 ND and 1250 WD forestry trailers. The crane is also sold for tractor mounting and to OEM customers for installation on forestry machines.

The crane is equipped with a CR300 rotator, FB190WF grapple and multi-lever valve as standard, with a variety of valve assemblies and accessories to choose from.

| | |
|----------------------------------|-------------|
| Reach: | 7.5 m |
| Lifting torque, gross: | 43 kNm |
| Lifting capacity, maximum reach: | 390 kg |
| Lifting capacity, 4 m: | 900 kg |
| Slewing torque: | 11 kNm |
| Slewing angle: | 360° |
| Rec. oil flow: | 35-40 l/min |
| Weight w/o grapple and rotator: | 900 kg |



MOWI P51

The Mowi P51 is designed for the Mowi 1250, 1250 ND, 1250 WD and 1450 WD forestry trailers. The crane is also sold to tractor assemblers and to OEM customers for mounting on forestry machines.

The crane is standard equipped with a CR400 rotator, FB260 grapple and multi-lever valve, with a variety of valve assemblies and accessories to choose from.

| | |
|----------------------------------|-------------|
| Reach: | 6.5 m |
| Lifting torque, gross: | 48.5 kNm |
| Lifting capacity, maximum reach: | 580 kg |
| Lifting capacity, 4 m: | 1100 kg |
| Slewing torque: | 15 kNm |
| Slewing angle: | 360° |
| Rec. oil flow: | 35-40 l/min |
| Weight w/o grapple and rotator: | 940 kg |



MOWI P51T

The Mowi P51T is designed for the Mowi 1250, 1250 WD, 1250 ND and 1450 WD forestry trailers. The crane is also sold to tractor assemblers and to OEM customers for mounting on forestry machines.

The crane is standard equipped with a CR400 rotator, FB260 grapple and multi-lever valve, with a variety of valve assemblies and accessories to choose from.

| | |
|----------------------------------|-------------|
| Reach: | 8.2 m |
| Lifting torque, gross: | 48 kNm |
| Lifting capacity, maximum reach: | 350 kg |
| Lifting capacity, 4 m: | 1000 kg |
| Slewing torque: | 15 kNm |
| Slewing angle: | 360° |
| Rec. oil flow: | 40-60 l/min |
| Weight w/o grapple and rotator: | 1060 kg |



MOWI P81T/P81DT

The Mowi P81T and P81DT are the two largest cranes from Mowi with greater reach and better parking modes.

A third cylinder gives the Mowi P81T/DT a completely new parking location. This allows the trailer to have a lower centre of gravity, while maintaining the popular characteristics of the Mowi crane.

| | |
|----------------------------------|--------------|
| Reach: | 8/9.4 m |
| Lifting torque, gross: | 83 kNm |
| Lifting capacity, maximum reach: | 740/540 kg |
| Lifting capacity, 4 m: | 1700/1500 kg |
| Slewing torque: | 21 kNm |
| Slewing angle: | 360° |
| Rec. oil flow: | 60-80 l/min |
| Weight w/o grapple and rotator: | 1620/1700 kg |



6. ROTATORS AND GRAPPLES

Grapples and buckets for a firm grip on the load

A wide range of rotators, grapples and buckets ensure a firm grip on the load regardless of the choice of trailer and type of harvesting. We offer a large variety of *rotators* and *rotator links* and a wide range of *timber grapples* and *buckets*.



ROTATOR CR300

Item no. KA2690

| | | | |
|---------------|-------------|---------------|----------------|
| P25 | P30 | P30T/ P31T | P40/ P41 |
| P40T/ P41T | P50/ P51 | P50T/ P51T | P81T/ P81DT |



ROTATOR CR400

Item no. KA2692

| | | | |
|---------------|-------------|---------------|----------------|
| P25 | P30 | P30T/ P31T | P40/ P41 |
| P40T/ P41T | P50/ P51 | P50T/ P51T | P81T/ P81DT |



ROTATOR CR400F

Item no. KA2693

| | | | |
|---------------|-------------|---------------|----------------|
| P25 | P30 | P30T/ P31T | P40/ P41 |
| P40T/ P41T | P50/ P51 | P50T/ P51T | P81T/ P81DT |



ROTATOR GV6

Item no. KA1987

| | | | |
|---------------|-------------|---------------|----------------|
| P25 | P30 | P30T/ P31T | P40/ P41 |
| P40T/ P41T | P50/ P51 | P50T/ P51T | P81T/ P81DT |



ROTATOR LINK UNBRAKED (CR300/CR400)

Item no. MB21796 - CR300
Item no. MB21797 - CR400

| | | | |
|---------------|-------------|---------------|----------------|
| P25 | P30 | P30T/ P31T | P40/ P41 |
| P40T/ P41T | P50/ P51 | P50T/ P51T | P81T/ P81DT |



ROTATOR LINK SINGLE BRAKED (CR300/400)

Item no. KA2691

| | | | |
|---------------|-------------|---------------|----------------|
| P25 | P30 | P30T/ P31T | P40/ P41 |
| P40T/ P41T | P50/ P51 | P50T/ P51T | P81T/ P81DT |



ROTATOR LINK SINGLE BRAKED (GV6)

Item no. KA2012

| | | | |
|---------------|-------------|---------------|----------------|
| P25 | P30 | P30T/ P31T | P40/ P41 |
| P40T/ P41T | P50/ P51 | P50T/ P51T | P81T/ P81DT |



ROTATOR LINK DOUBLE BRAKED (GV6)

Item no. KA1985

| | | | |
|---------------|-------------|---------------|----------------|
| P25 | P30 | P30T/ P31T | P40/ P41 |
| P40T/ P41T | P50/ P51 | P50T/ P51T | P81T/ P81DT |



TIMBER GRAPPLE FB160

Item no. KA1653

| | | | |
|---------------|-------------|---------------|----------------|
| P25 | P30 | P30T/ P31T | P40/ P41 |
| P40T/ P41T | P50/ P51 | P50T/ P51T | P81T/ P81DT |



BRASH GRAPPLE FB160S

Item no. KA2779

| | | | |
|---------------|-------------|---------------|----------------|
| P25 | P30 | P30T/ P31T | P40/ P41 |
| P40T/ P41T | P50/ P51 | P50T/ P51T | P81T/ P81DT |



TIMBER GRAPPLE FB190

Item no. KA1692

| | | | |
|---------------|-------------|---------------|----------------|
| P25 | P30 | P30T/ P31T | P40/ P41 |
| P40T/ P41T | P50/ P51 | P50T/ P51T | P81T/ P81DT |



TIMBER GRAPPLE FB190WF

Item no. KA1918

| | | | |
|---------------|-------------|---------------|----------------|
| P25 | P30 | P30T/ P31T | P40/ P41 |
| P40T/ P41T | P50/ P51 | P50T/ P51T | P81T/ P81DT |



BRASH GRAPPLE FB190S

Item no. KA2780

| | | | |
|---------------|-------------|---------------|----------------|
| P25 | P30 | P30T/ P31T | P40/ P41 |
| P40T/ P41T | P50/ P51 | P50T/ P51T | P81T/ P81DT |



TIMBER GRAPPLE G210S (49/59)

Item no. M22140 (49 mm)
Item no. M22140-1 (59 mm)

| | | | |
|---------------|-------------|---------------|----------------|
| P25 | P30 | P30T/ P31T | P40/ P41 |
| P40T/ P41T | P50/ P51 | P50T/ P51T | P81T/ P81DT |



TIMBER GRAPPLE G210SR (49/59)

Item no. MB21820-2 (49 mm)
Item no. M22140-2 (59 mm)

| | | | |
|---------------|-------------|---------------|----------------|
| P25 | P30 | P30T/ P31T | P40/ P41 |
| P40T/ P41T | P50/ P51 | P50T/ P51T | P81T/ P81DT |



TIMBER GRAPPLE FB260

Item no. KA1862

| | | | |
|---------------|-------------|---------------|----------------|
| P25 | P30 | P30T/ P31T | P40/ P41 |
| P40T/ P41T | P50/ P51 | P50T/ P51T | P81T/ P81DT |

DATA TABLE FOR GRAPPLES

| | FB160 | FB160S | FB190 | FB190WF | FB190S | G210S | G210SR | FB260 |
|--------------------------------|--------|--------|--------|---------|--------|--------------------|-----------------------|--------|
| Item no. | KA1653 | KA2779 | KA1692 | KA1918 | KA2780 | M22140 M22140-1 | MB21820-2 M22140-2 | KA1862 |
| Grapple surface m ² | 0.16 | 0.16 | 0.195 | 0.195 | 0.19 | 0.21 | 0.21 | 0.26 |
| Max. grapple width (mm) | 1010 | 1020 | 1200 | 1200 | 1270 | 1200 | 1200 | 1300 |
| Min. grapple width (mm) | 50 | 50 | 50 | 50 | 50 | 70 | 70 | 50 |
| Height (mm) | 402 | 401 | 416 | 400 | 420 | 786 | 790 | 500 |
| Width (mm) | 217 | 214 | 272 | 295 | 220 | 310 | 310 | 300 |
| Cylinder dim. (mm) | 60/30 | 60/30 | 63/32 | 63/32 | 63/32 | 70/40 | 70/40 | 80/40 |
| Weight (kg) | 55 | 65 | 68 | 81 | 73 | 110 | 110 | 115 |
| Rotator shaft (mm) | 49 | 49 | 49 | flange | 49 | 49/59 | 49/59 | flange |
| Peak force (kN) | 7.5 | 7.5 | 9 | 9 | 9 | 8 | 8 | 12 |



GRAPPLE BUCKET G180GS (400 MM WIDE)

Item no. KA1882

| | | | |
|---------------|-------------|---------------|----------------|
| P25 | P30 | P30T/ P31T | P40/ P41 |
| P40T/ P41T | P50/ P51 | P50T/ P51T | P81T/ P81DT |

GRAPPLE BUCKET G180GS (625 MM WIDE)

Item no. M22450

| | | | |
|---------------|-------------|---------------|----------------|
| P25 | P30 | P30T/ P31T | P40/ P41 |
| P40T/ P41T | P50/ P51 | P50T/ P51T | P81T/ P81DT |

GRAPPLE BUCKET FB120V

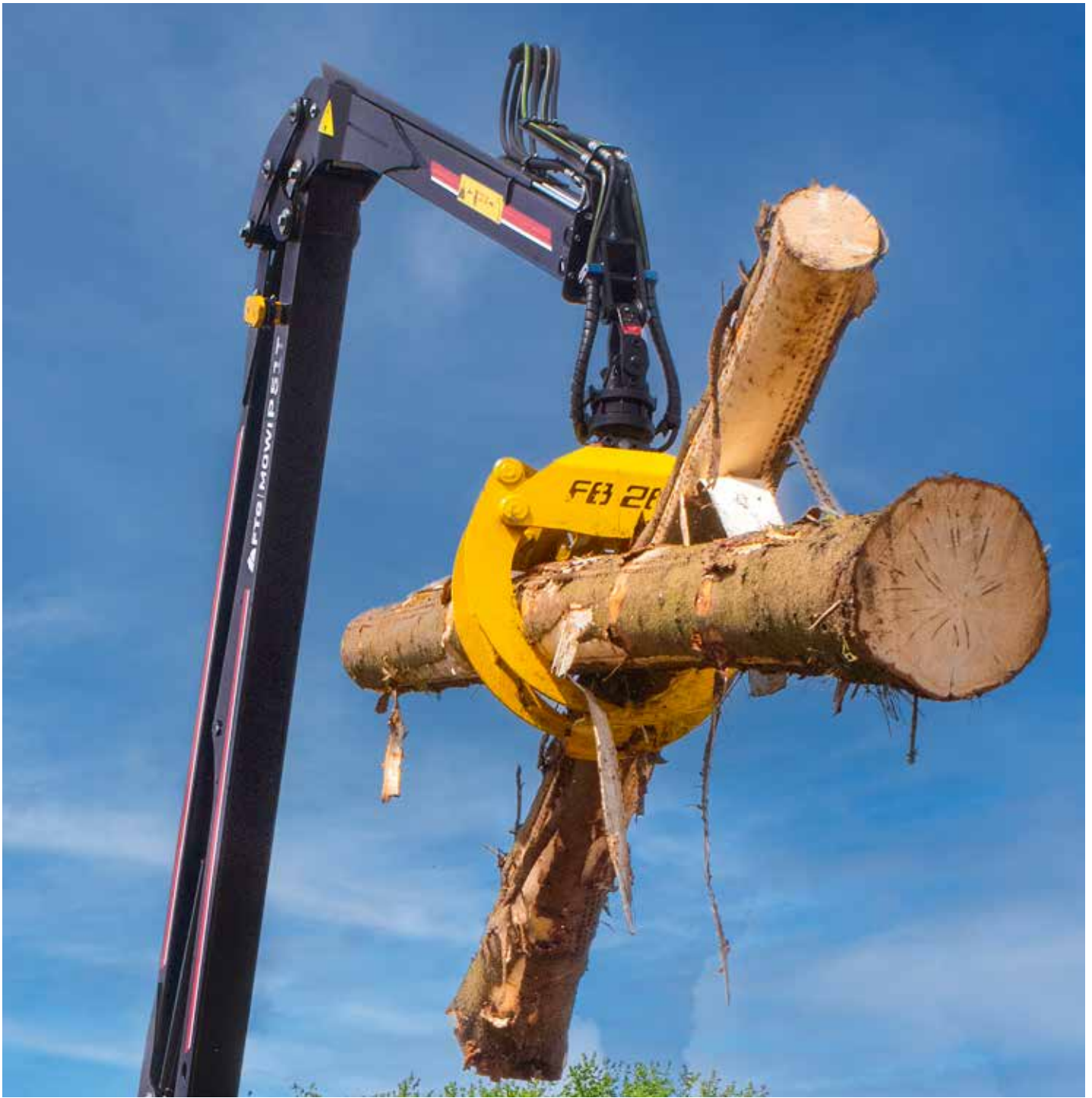
Item no. KA2029

| | | | |
|---------------|-------------|---------------|----------------|
| P25 | P30 | P30T/ P31T | P40/ P41 |
| P40T/ P41T | P50/ P51 | P50T/ P51T | P81T/ P81DT |



INSERT BUCKETS

| Suitable for: | G160L | G210S | G260L | FB160 | FB190 | FB260 |
|-----------------|--------|--------|--------|--------|--------|--------|
| Item no. | M22312 | M22317 | M22316 | M22322 | M22323 | KA2563 |
| Volume (litres) | 110 | 190 | 200 | 110 | 120 | 150 |
| Length (mm) | 810 | 800 | 820 | 582 | 600 | 750 |
| Height (mm) | 380 | 470 | 520 | 460 | 460 | 550 |
| Width (mm) | 480 | 630 | 80 | 560 | 590 | 650 |
| Weight (kg) | 45 | 70 | 80 | 33 | 35 | 45 |



**ADAPTER PLATE
49 MM**

Item no. KA1863



**ADAPTER PLATE
59 MM**

Item no. KA2039



**ADAPTER
49 MM TO 59 MM**

Item no. KA1759



**ADAPTER
59 MM TO 49 MM**

Item no. FA0789

7. VALVE ASSEMBLIES

Valve assemblies and control systems tailored to your needs

When selecting valve assemblies and control systems, it's important to consider factors such as ergonomics, handling, and tractor installation. However, we offer a valve assembly to meet every customer's needs. Our PCL and EHC valves are conveniently mounted in the crane base to ensure a low center of gravity and maximum protection. With the help of the valve rack, the valve can be easily removed for servicing.



**MULTI-LEVER VALVE
HCD3M**

| | | | |
|---------------|-------------|---------------|----------------|
| P25 | P30 | P30T/ P31T | P40/ P41 |
| P40T/ P41T | P50/ P51 | P50T/ P51T | P81T/ P81DT |



**TWO LEVER VALVE
HCD3M**

| | | | |
|---------------|-------------|---------------|----------------|
| P25 | P30 | P30T/ P31T | P40/ P41 |
| P40T/ P41T | P50/ P51 | P50T/ P51T | P81T/ P81DT |



**LIGHTWEIGHT VALVE
HCD3M**

| | | | |
|---------------|-------------|---------------|----------------|
| P25 | P30 | P30T/ P31T | P40/ P41 |
| P40T/ P41T | P50/ P51 | P50T/ P51T | P81T/ P81DT |



**PCL VALVE
ELECTR. ON/OFF**

| | | | |
|---------------|-------------|---------------|----------------|
| P25 | P30 | P30T/ P31T | P40/ P41 |
| P40T/ P41T | P50/ P51 | P50T/ P51T | P81T/ P81DT |



**PCL-VALVE
PROPORTIONAL
GRAPPLE/EXTENSION**

| | | | |
|---------------|-------------|---------------|----------------|
| P25 | P30 | P30T/ P31T | P40/ P41 |
| P40T/ P41T | P50/ P51 | P50T/ P51T | P81T/ P81DT |



**EHC VALVE
MINILEVER**

| | | | |
|---------------|-------------|---------------|----------------|
| P25 | P30 | P30T/ P31T | P40/ P41 |
| P40T/ P41T | P50/ P51 | P50T/ P51T | P81T/ P81DT |



**EHC VALVE
SCANREC
RADIO CONTROL**

| | | | |
|---------------|-------------|---------------|----------------|
| P25 | P30 | P30T/ P31T | P40/ P41 |
| P40T/ P41T | P50/ P51 | P50T/ P51T | P81T/ P81DT |





THE FTG XCRANE ADVANCED CRANE TIP (X-ACT) SYSTEM TAKES THE CONTROL OF GRAPPLE LOADING CRANES TO A WHOLE NEW LEVEL.



FTG X-ACT is an intelligent system with sensors on the telescope, boom, lifting arm and slewing motor that constantly notes the position of the crane. Advanced technology then controls the different parts of the crane synchronously to move the grapple to where you want.. All you have to do as an operator is to decide whether the tip of the crane should go up or down, forwards or backwards.

With one lever for horizontal and one for vertical movement, the crane is very easy and precise to control. As an operator, you control the tip of the crane directly instead of manoeuvring its individual parts separately.

The FTG X-ACT not only makes crane operation easier, but also provides relief for operators during long working days, while increasing productivity with superior precision.

The FTG X-ACT System is available as an option for the large P81DT crane.



**CONSOLE FOR
JOYSTICK
ATTACHMENT**

Item no. NB8002302
Valtra 6000

**CONSOLE FOR
JOYSTICK
ATTACHMENT**

Item no. NB37486-0
Valtra N series

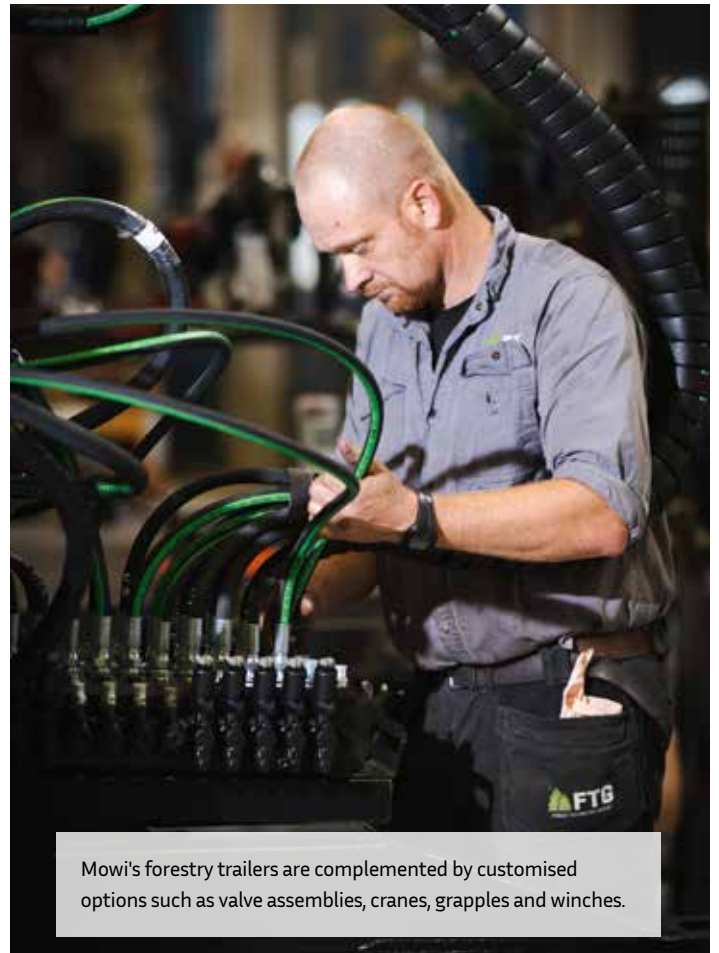
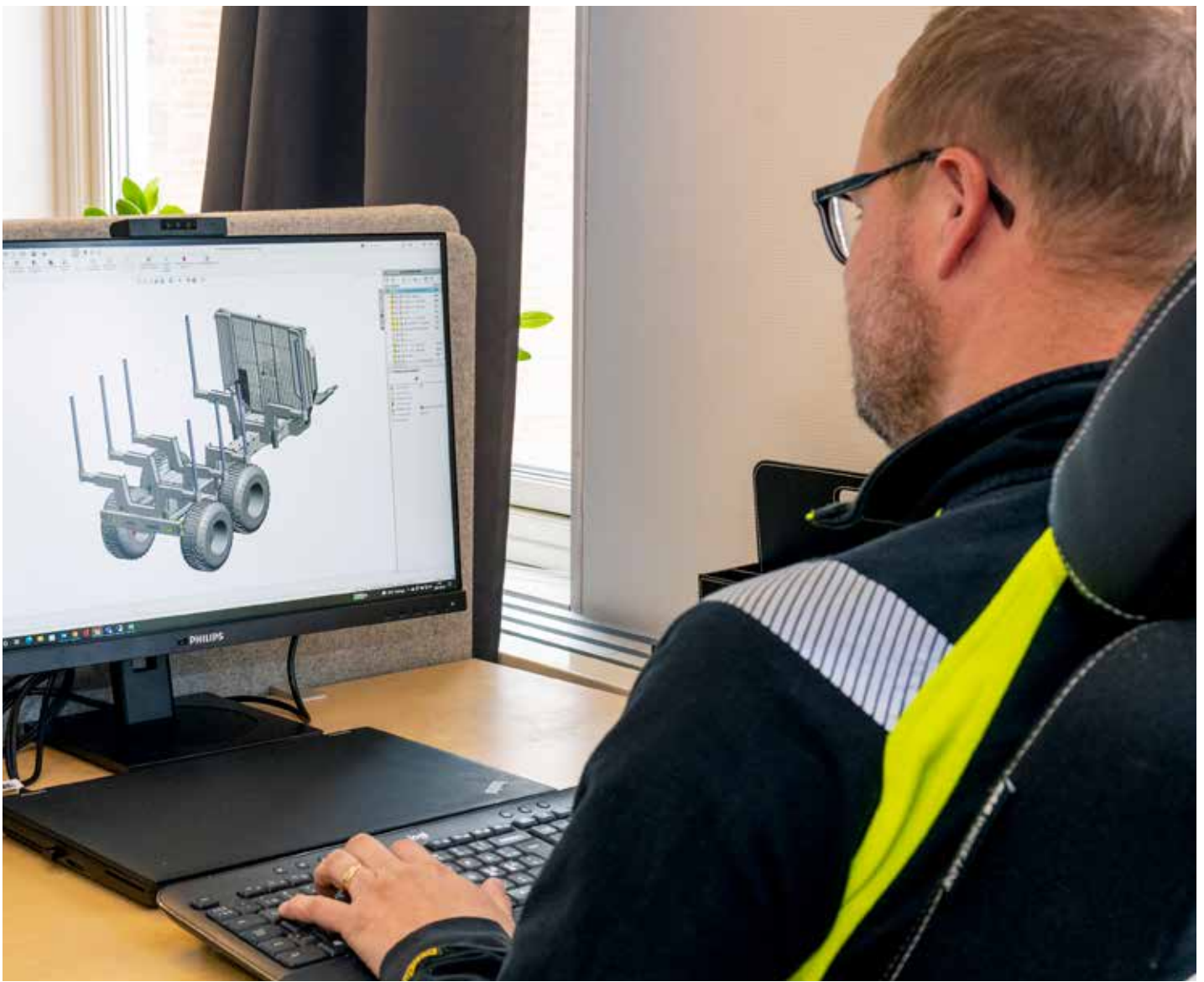
**CONSOLE FOR
JOYSTICK
ATTACHMENT**

Item no. NB8002300

**VALVE BRACKET
(ARM)**

Item no. N8002200
Valtra A-series





Mowi's forestry trailers are complemented by customised options such as valve assemblies, cranes, grapples and winches.

8. WINCHES

Extend your working range with a hydraulic winch

During your day in the forest, you sometimes need to reach further than the crane allows. A *winch* extends the working range of the trailer and allows you to quickly and smoothly pull the logs close enough for the crane arm to reach them. Winches are offered in a variety of models, based on criteria such as *mounting method*, *lifting capacity* and *reach*.



WINCH MV1410

Item no. FA0388

| P25 | P30 | P30T/ P31T | P40/ P41 |
|---------------|-------------|---------------|----------------|
| P40T/ P41T | P50/ P51 | P50T/ P51T | P81T/ P81DT |
| 850 | 1050 | 1250 | 1450 |
| 1050 WD | 1250 ND | 1250 WD | 1450 WD |

WINCH MV1810

Item no. FA0389

| P25 | P30 | P30T/ P31T | P40/ P41 |
|---------------|-------------|---------------|----------------|
| P40T/ P41T | P50/ P51 | P50T/ P51T | P81T/ P81DT |
| 850 | 1050 | 1250 | 1450 |
| 1050 WD | 1250 ND | 1250 WD | 1450 WD |

WINCH KIT MV1410

Item no. FA0398
Alternative mounting

| P25 | P30 | P30T/ P31T | P40/ P41 |
|---------------|-------------|---------------|----------------|
| P40T/ P41T | P50/ P51 | P50T/ P51T | P81T/ P81DT |
| 850 | 1050 | 1250 | 1450 |
| 1050 WD | 1250 ND | 1250 WD | 1450 WD |

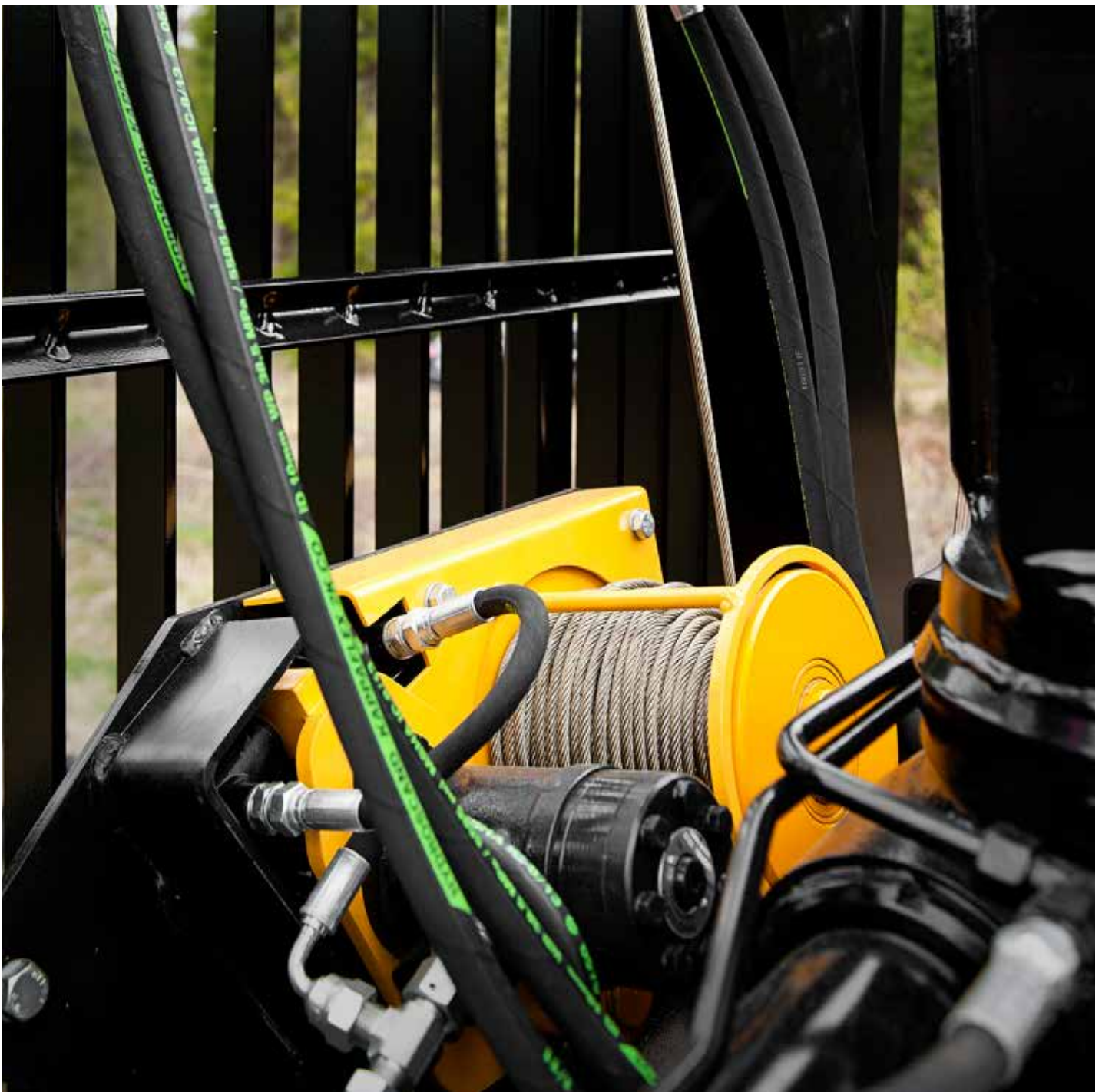
WINCH KIT MV1810

Item no. FA0399
Alternative mounting

| P25 | P30 | P30T/ P31T | P40/ P41 |
|---------------|-------------|---------------|----------------|
| P40T/ P41T | P50/ P51 | P50T/ P51T | P81T/ P81DT |
| 850 | 1050 | 1250 | 1450 |
| 1050 WD | 1250 ND | 1250 WD | 1450 WD |

WINCH ASSEMBLY KITS

| Item no. | P25 | P30 | P30T/ P31T | P40/ P41 | P40T/ P41T | P50/ P51 | P50T/ P51T | P81T/ P81DT | 850 | 1050 | 1050 WD | 1250 | 1250 WD | 1250 ND | 1450 | 1450 WD |
|----------|-----|-----|---------------|-------------|---------------|-------------|---------------|----------------|-----|------|------------|------|------------|------------|------|------------|
| FA0392 | | | | | | | | | ■ | | | | | | | |
| FA0393 | | | | | | | | | ■ | | | | | | | |
| FA0394 | | | | | | | | | | ■ | ■ | ■ | ■ | ■ | ■ | ■ |
| FA0395 | | | | | | | | | | ■ | ■ | ■ | ■ | ■ | ■ | ■ |
| FA0396 | ■ | ■ | ■ | ■ | ■ | ■ | ■ | ■ | | | | | | | | |
| FA0397 | ■ | ■ | ■ | ■ | ■ | ■ | ■ | ■ | | | | | | | | |



**PULLEY
VERTICAL**

Item no. MB31360-4



**PULLEY
HANGING**

Item no. MB31360-3



**PULLEY
OPEN**

Item no. AA2968



**RADIO CONTROL FOR
WINCHES**

Item no. M43436
When buying new winch
Item no. M43436-1
For retrofitting



9. OTHER ACCESSORIES

Accessories that adds that extra dimension to your trailer

A good day in the forest can be made even better with a little effort. With smart solutions and well-designed accessories, capacity can be improved and work made easier.



SUPPORT LEGS HYDRAULIC

Item no. M23135

| | | | |
|------------|------------|------------|------------|
| 850 | 1050 | 1250 | 1450 |
| 1050 WD | 1250 ND | 1250 WD | 1450 WD |



SUPPORT LEGS HYDRAULIC

Item no. AA3505

| | | | |
|------------|------------|------------|------------|
| 850 | 1050 | 1250 | 1450 |
| 1050 WD | 1250 ND | 1250 WD | 1450 WD |



EXTENSION POLES 1 PAIR

Item no. M44220

| | | | |
|------------|------------|------------|------------|
| 850 | 1050 | 1250 | 1450 |
| 1050 WD | 1250 ND | 1250 WD | 1450 WD |



DIVIDING POLES 1 PAIR

Item no. M44210

| | | | |
|------------|------------|------------|------------|
| 850 | 1050 | 1250 | 1450 |
| 1050 WD | 1250 ND | 1250 WD | 1450 WD |



ROTATION STOP

Item no. AA8940

| | | | |
|------------|------------|------------|------------|
| 850 | 1050 | 1250 | 1450 |
| 1050 WD | 1250 ND | 1250 WD | 1450 WD |



SORTING ATTACHMENT

Item no. FA0777

| | | | |
|------------|------------|------------|------------|
| 850 | 1050 | 1250 | 1450 |
| 1050 WD | 1250 ND | 1250 WD | 1450 WD |



HYDRAULIC POLES

Item no. FA0493

| | | | |
|------------|------------|------------|------------|
| 850 | 1050 | 1250 | 1450 |
| 1050 WD | 1250 ND | 1250 WD | 1450 WD |



FORWARDER BUNKS

Item no. FA0811

| | | | |
|------------|------------|------------|------------|
| 850 | 1050 | 1250 | 1450 |
| 1050 WD | 1250 ND | 1250 WD | 1450 WD |



TOOL BOX

| Item no. | Left or right | 850 | 1050 | 1050 WD | 1250 | 1250 WD | 1250 ND | 1450 | 1450 WD |
|----------|---------------|-----|------|------------|------|------------|------------|------|------------|
| AA3610-V | Left | ■ | | | | | | | |
| AA3610-H | Right | ■ | | | | | | | |
| AA3488-V | Left | | ■ | ■ | ■ | ■ | ■ | | |
| AA3488-H | Right | | ■ | ■ | ■ | ■ | ■ | | |
| AA3540 | Both | | ■ | ■ | ■ | ■ | ■ | | |
| AA4055-V | Left | | | | | | | ■ | ■ |
| AA4055-H | Right | | | | | | | ■ | ■ |



INSERT PLATES - GALVANISED

| | Suitable for | 850 | 1050 | 1050 WD | 1250 | 1250 WD | 1250 ND | 1450 | 1450 WD |
|--------|--------------|-----|------|------------|------|------------|------------|------|------------|
| FA0782 | | ■ | | | | | | | |
| FA0512 | | | ■ | ■ | | | | | |
| FA0513 | | | | | ■ | ■ | ■ | | |
| AA5249 | | | | | | | | ■ | ■ |



SINGLE SLEWING HOUSING

Item no. AA2320-2



DOUBLE SLEWING HOUSING

Item no. AA2320-1



SLEWING HOUSING LARGER MODEL

Item no. AA2340-1

More information about our accessories can be found on our website.

Scan the QR code to get there!





VALVE LIFTING TOOL

Item no. KA1014



CHAINSAW HOLDER

Item no. AA3022-1
For mounting on support legs



CHAINSAW HOLDER

Item no. FA0413
For mounting on crane pallet



2 X FLASHING LIGHTS REAR

Item no. KA2427



EXTRA BUNK INCL. STAKES REAR

Item no. M44115
850

| | | | |
|---------|---------|---------|---------|
| 850 | 1050 | 1250 | 1450 |
| 1050 WD | 1250 ND | 1250 WD | 1450 WD |



EXTRA BUNK INCL. STAKES

Item no. AA3861
850 with rear lights

| | | | |
|---------|---------|---------|---------|
| 850 | 1050 | 1250 | 1450 |
| 1050 WD | 1250 ND | 1250 WD | 1450 WD |



EXTRA BUNK INCL. STAKES FRONT

Item no. AA3679
1050

| | | | |
|---------|---------|---------|---------|
| 850 | 1050 | 1250 | 1450 |
| 1050 WD | 1250 ND | 1250 WD | 1450 WD |



EXTRA BUNK INCL. STAKES FRONT

Item no. AA3520
1250

| | | | |
|---------|---------|---------|---------|
| 850 | 1050 | 1250 | 1450 |
| 1050 WD | 1250 ND | 1250 WD | 1450 WD |



OIL COOLER WITH HOSE

Item no. FA0780
1050-1250
Item no. FA0462 1450-1450WD



THREE-POINT HITCH CAT. I

Item no. KA2775



THREE-POINT HITCH CAT II

Item no. KFB200090



THREE-POINT HITCH CAT III

Item no. KA2776



Working light on crane base

WORKING LIGHTS

| Item no. | Placement | P25 | P30 | P30T P31T | P40 P41 | P40T P41T | P50 P51 | P50T P51T | P81T P81DT | 850 | 1050 | 1050 WD | 1250 | 1250 WD | 1250 ND | 1450 | 1450 WD |
|----------|--|-----|-----|--------------|------------|--------------|------------|--------------|---------------|-----|------|------------|------|------------|------------|------|------------|
| FA0427 | On pillar (x 2) | | | ■ | ■ | ■ | ■ | ■ | ■ | | | | | | | | |
| FA0786 | On second boom (x2) | | | ■ | ■ | ■ | | | | | | | | | | | |
| FA0800 | Under second boom | | | | | | ■ | ■ | ■ | | | | | | | | |
| FA0787 | Trailer package (1 rear light +2 on pillar) | | | | | | | | | | ■ | ■ | ■ | ■ | ■ | ■ | ■ |



WORKING LIGHTS LED

Item no. FA0427
to be mounted on pillar



REAR VIEW CAMERA PACKAGE

Item no. KA1490
incl. light

| | | | |
|------------|------------|------------|------------|
| 850 | 1050 | 1250 | 1450 |
| 1050 WD | 1250 ND | 1250 WD | 1450 WD |



Many strong reasons to choose FTG Mowi

It takes time to learn how to build good forestry trailers. We know. We have been doing this for over 60 years. Competence and experience have been developed step by step and we now have a product program that we are very proud of. For decades we have been working on the details to offer a technology that works in the forest and fulfils all requirements.

It all started with a man named Wiking Gunnarsson, who had an idea for a parallel crane. Wiking ran and worked at a company that was then known as Moderna Traktortransporter. The company worked a great deal together with the Swedish power company Vattenfall. They cleared the area and delivered power line poles when new electrical lines were being installed. They had a lot of experience in forestry work. Wiking had an idea to make a parallel crane based on the furniture company IKEA's classic desk lamp.

In Bäckefors there was Adil Wikhede, who had started Wikhede Mekaniska back in 1968, in FTG's present premises.

Wiking read in the local newspaper that Wikhede Mekaniska was not very busy. So, he went there with his drawings. They got on well and founded the brand MOWI, taken from the two company names.

Around 1980, they produced prototypes and the first MOWI crane, the 245, saw the light of day. The invention proved a success and thousands of cranes and forestry trailers have left the factory in Bäckefors in the years since then. Every good crane needs a forestry trailer, Wiking reasoned. In conjunction with the crane launch, they also developed a new forestry trailer.

Mowi's Swedish-made forestry trailers are designed for hard work in Nordic conditions. Our designers have worked hard and purposefully to make Mowi products efficient, safe and durable.

The concept of parallel operation was also developed for cranes for forestry machines and the Mowi name became symbolic for easy-to-use machines.

Some bigger forestry machine brands still use Mowi parallel harvester cranes, such as Tigercat and Sampo Rosenlew to name a few. Today, in addition to cranes and forestry trailers, FTG also produces cranes for smaller forestry machines such as Vimek, Malwa and Terri.

Nowadays, Mowi has strong alternatives both for those who work full-time in the forest and for those who go out for a few weeks per season.

Our work doesn't end when the trailer is delivered.

Together with our dealers, we take responsibility for ensuring that spare parts are quickly available and that service and support are always close at hand.



FORESTRY EXPERIENCE

FTG Mowi trailers have been developed are developed by forestry professionals for forestry enthusiasts. Many of our employees use our products in their own forest. We also maintain a constant dialogue with our customers when developing our products to ensure customer satisfaction and quality.



MADE IN SWEDEN

Our trailers are developed, assembled and tested in our factory in Bäckefors. In wooded areas in the heart of Dalsland, forestry and blacksmithing traditions date back to the 19th century. The Mowi brand is rooted in these ancient regions.



HIGH SECOND HAND VALUE

High quality, reliability and a strong brand create stable demand for our forestry trailers, which contributes to a high resale value.

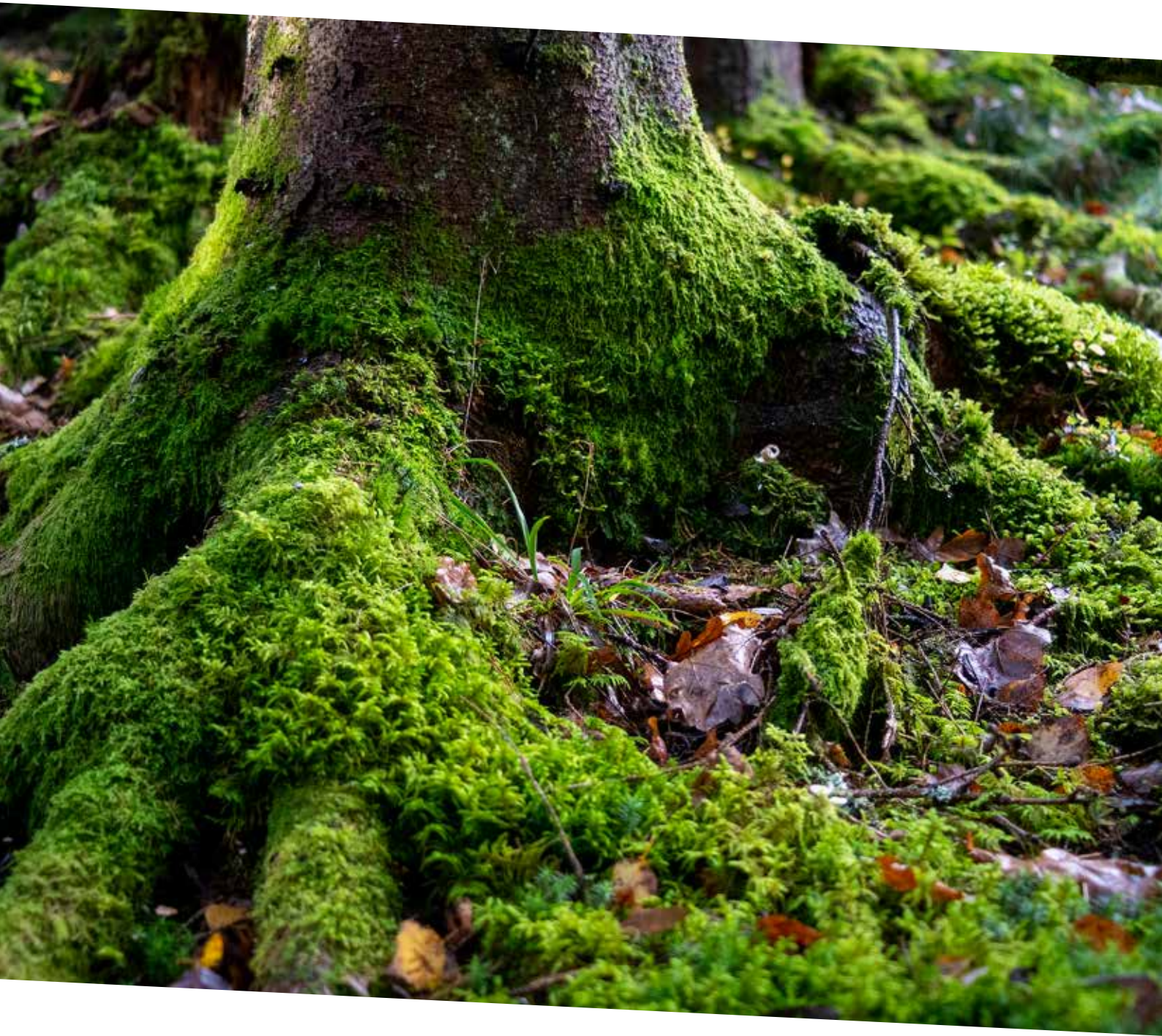


QUALITY SERVICE

Close and easily accessible service and support. Fast delivery of spare parts and a strong dealer network with its own workshops.



FTG | **MOWI**



FTG

FTG Cranes AB

Industrigatan 1, 668 40 Bäckefors | Tfn +46 (0)521-26 26 30
info@ftgforest.com | www.ftgforest.com